

QUÉBEC NICKEL

CSE: QNI OTCQB: QNICF FSE: 7IB

INVESTOR PRESENTATION

July 2024

Disclaimer

This Presentation contains certain information that may constitute “forward-looking information” under applicable Canadian securities legislation about Québec Nickel Corp. (“QNI”, “Québec Nickel”). Forward-looking information includes statements about strategic plans, including future operations, future work programs, capital expenditures, discovery and production of minerals, price of Nickel, timing of geological reports and corporate and technical objectives. Forward-looking information is necessarily based upon a number of assumptions that, while considered reasonable, are subject to known and unknown risks, uncertainties, and other factors which may cause the actual results and future events to differ materially from those expressed or implied by such forward-looking information, including the risks inherent to the mining industry, adverse economic and market developments. There can be no assurance that such information will prove to be accurate, as actual results and future events could differ materially from those anticipated in such information. Accordingly, readers should not place undue reliance on forward-looking information. All forward-looking information contained in this Presentation is given as of the date hereof and is based upon the opinions and estimates of management and information available to management as at the date hereof. QNI disclaims any intention or obligation to update or revise any forward-looking information, whether as a result of new information, future events or otherwise, except as required by law.

This Presentation has been completed by QNI. Certain corporate projects referred to herein are subject to agreements with third parties who have not prepared, reviewed or approved this Presentation. The Presentation is not intended to reflect the actual plans or exploration and development programs contemplated for such projects. Any forward-looking statement speaks only as of the date on which it is made and, except as may be required by applicable securities laws, QNI disclaims any intent or obligation to update any forward-looking statement, whether as a result of new information, future events or results or otherwise. Although QNI believes the assumptions inherent in the forward-looking statements are reasonable, forward-looking statements are not guarantees of future performance, and accordingly, undue reliance should not be put on such statements due to the inherent uncertainty therein.

The scientific and technical information contained in this Presentation has been reviewed by, a Qualified Person within the meaning of National Instrument 43-101.

About Québec Nickel Corp.

Québec Nickel Corp. (QNI) is a well-funded mineral exploration company with a unique Critical Minerals project (Ni-Cu-Co-PGE) in the eastern Abitibi Greenstone belt, within the mining-friendly province of Québec, Canada.



“Canada’s Critical Minerals Strategy will boost the supply of critical minerals to grow domestic and global value chains for the green and digital economy.”

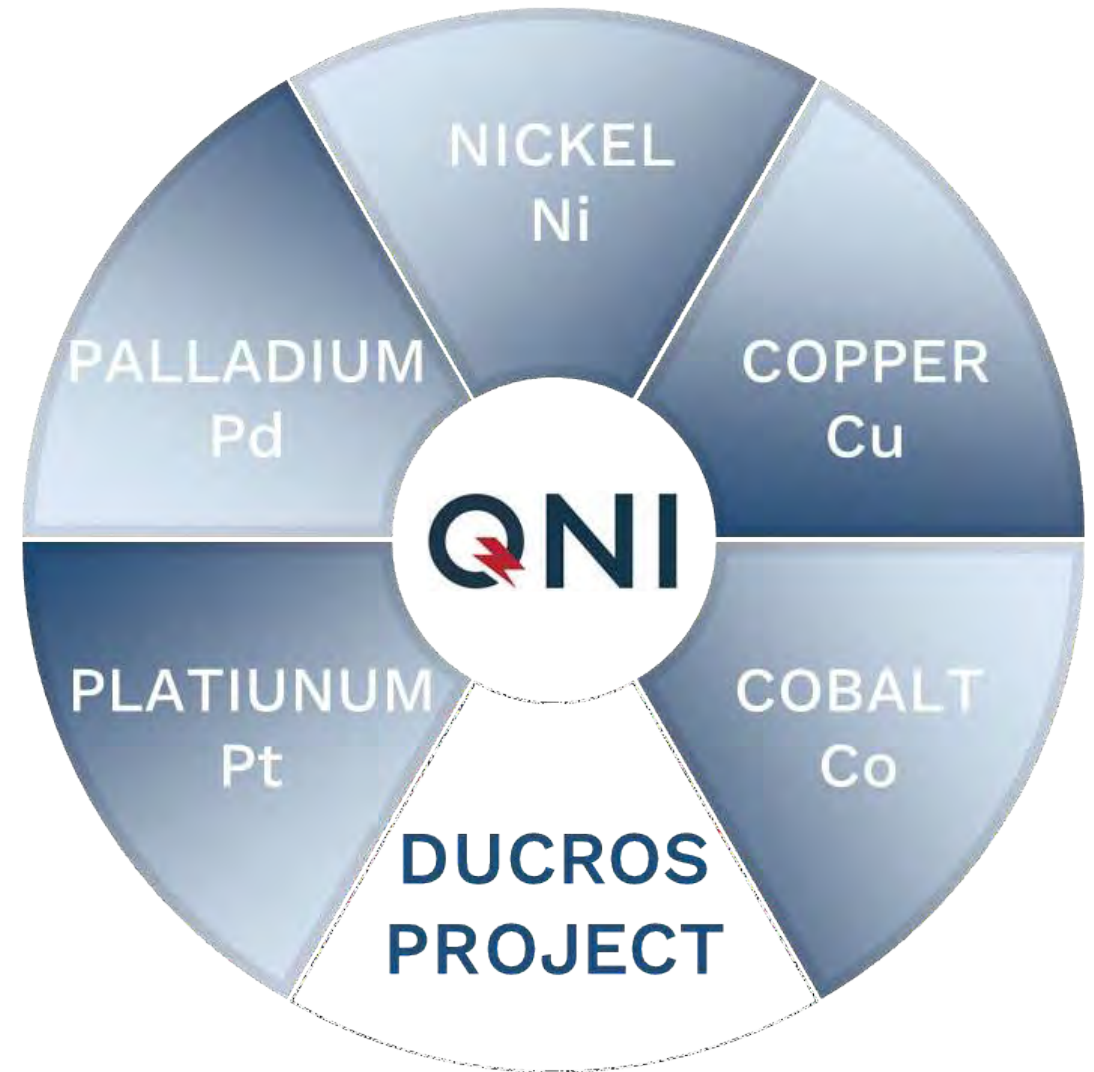
- *Canada’s critical minerals strategy: Discussion paper*

Exploring for Critical Metals

APPLICATIONS FOR THE GREEN ECONOMY



- ✓ **Critical metals:** Key materials in clean energy technologies and battery transition.
- ✓ **Nickel:** Essential to EV battery production as Ni prolongs the vehicles range. World supply cannot meet the demand.
- ✓ **Copper:** Used in most elements of EV batteries for its conductivity. 3.5x the amount than is required in traditional cars.
- ✓ **Platinum:** For Use in production of hydrogen fuel
- ✓ **Palladium:** Catalytic converters for car gas or diesel exhausts
- ✓ **Cobalt:** Essential in lithium-ion batteries as they ensure cathodes to not overheat thus prolonging the life of EV batteries



Current Landscape



Federal Support

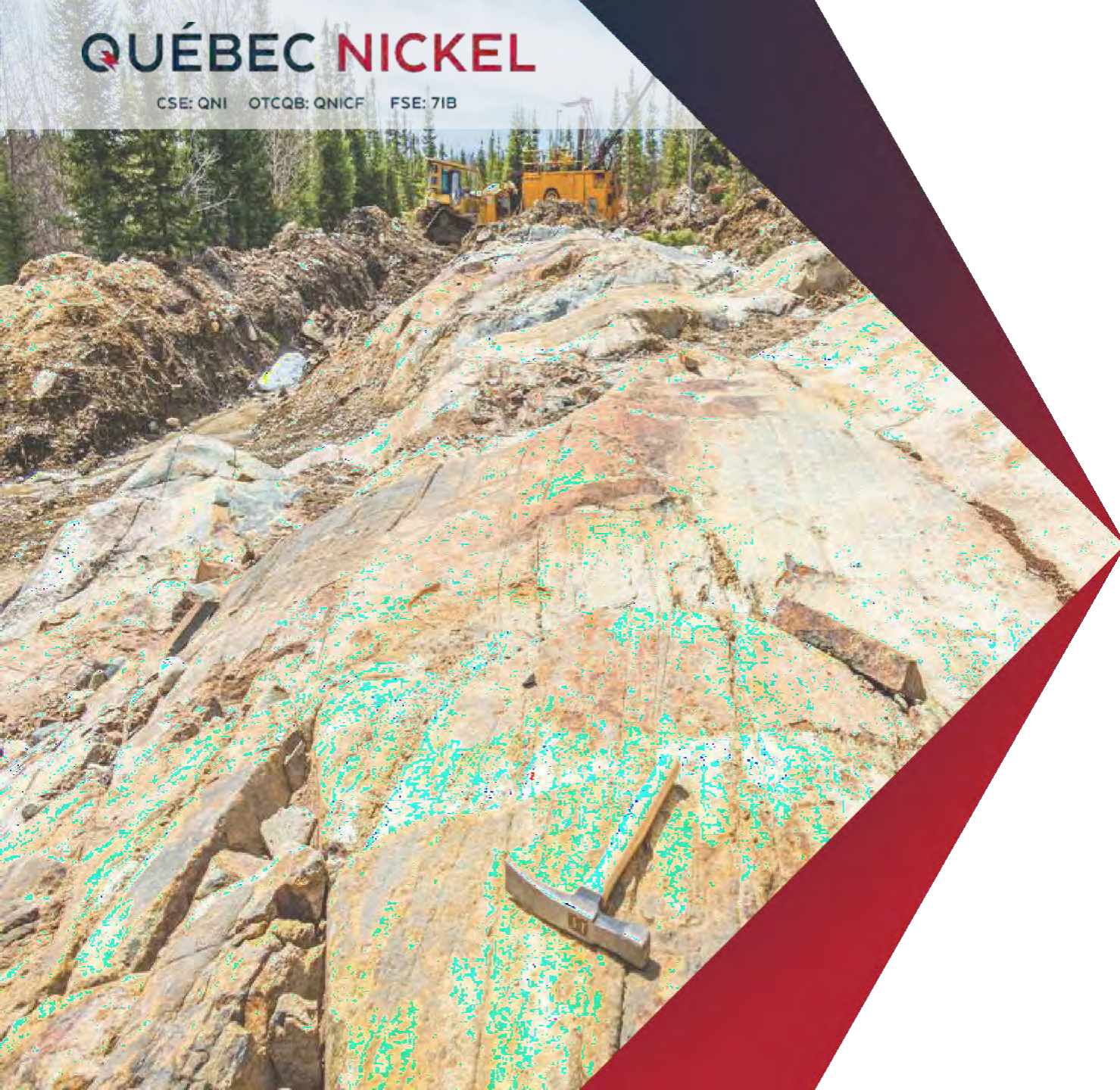
- ✓ Canada's 2050 net zero target
- ✓ C\$3.8B of federal budget allocated to responsibly sourced critical metals exploration

Commodity Prices

- ✓ Nickel prices have been on upward trend over past decade (approx. 120%)
- ✓ Copper

Robust Demand & Global Significance

- ✓ Energy sectors demand for critical minerals projected to increase up to 6X by 2040 (International Energy Agency)
- ✓ Battery Supply chain in Canada expected to contribute between \$5.7-24B in GDP by 2030



CORPORATE

MANAGEMENT



David Patterson, Executive Chairman

David is a former CEO of Emerita Resources Corp., an exploration and development company listed on the TSXV. David was also Chairman of Donner Metals Ltd., a mineral exploration and development company listed on the TSXV. For more than 30 years he has been involved in the administration and financing of exploration companies based in North America. David holds a Masters of Business Administration from Simon Fraser University (1991).



Ming Jang, CFO

Ming is a professional accountant with 25 years of senior financial management experience in various sectors, including cannabis, nonprofit organizations and mining. He currently serves as a financial consultant to various private and publicly listed companies. Ming drives robust financial management and the set-up, implementation, and oversight of financial and regulatory processes.

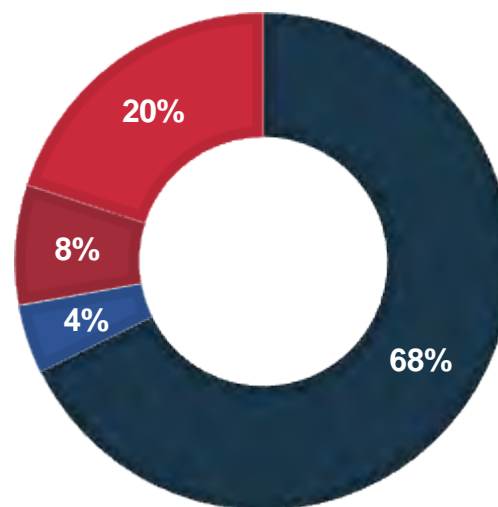
Capital Structure

Share Structure*

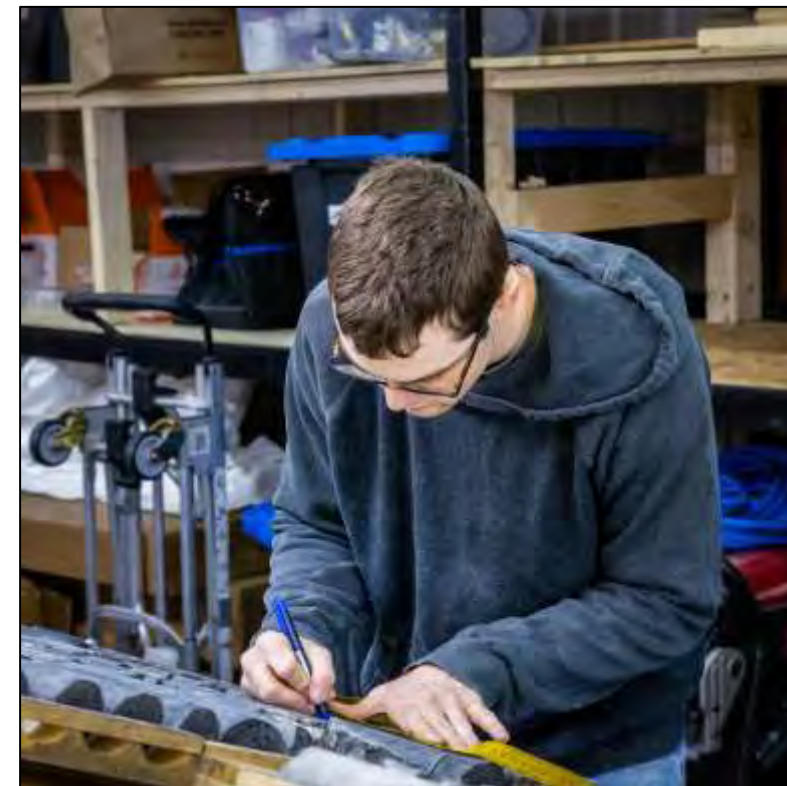
Share Type	Quantity
Shares Issued	~11.5 Million
Stock Options	~.65 Million
Warrants	~.75 Million
Fully Diluted	~12.9 Million

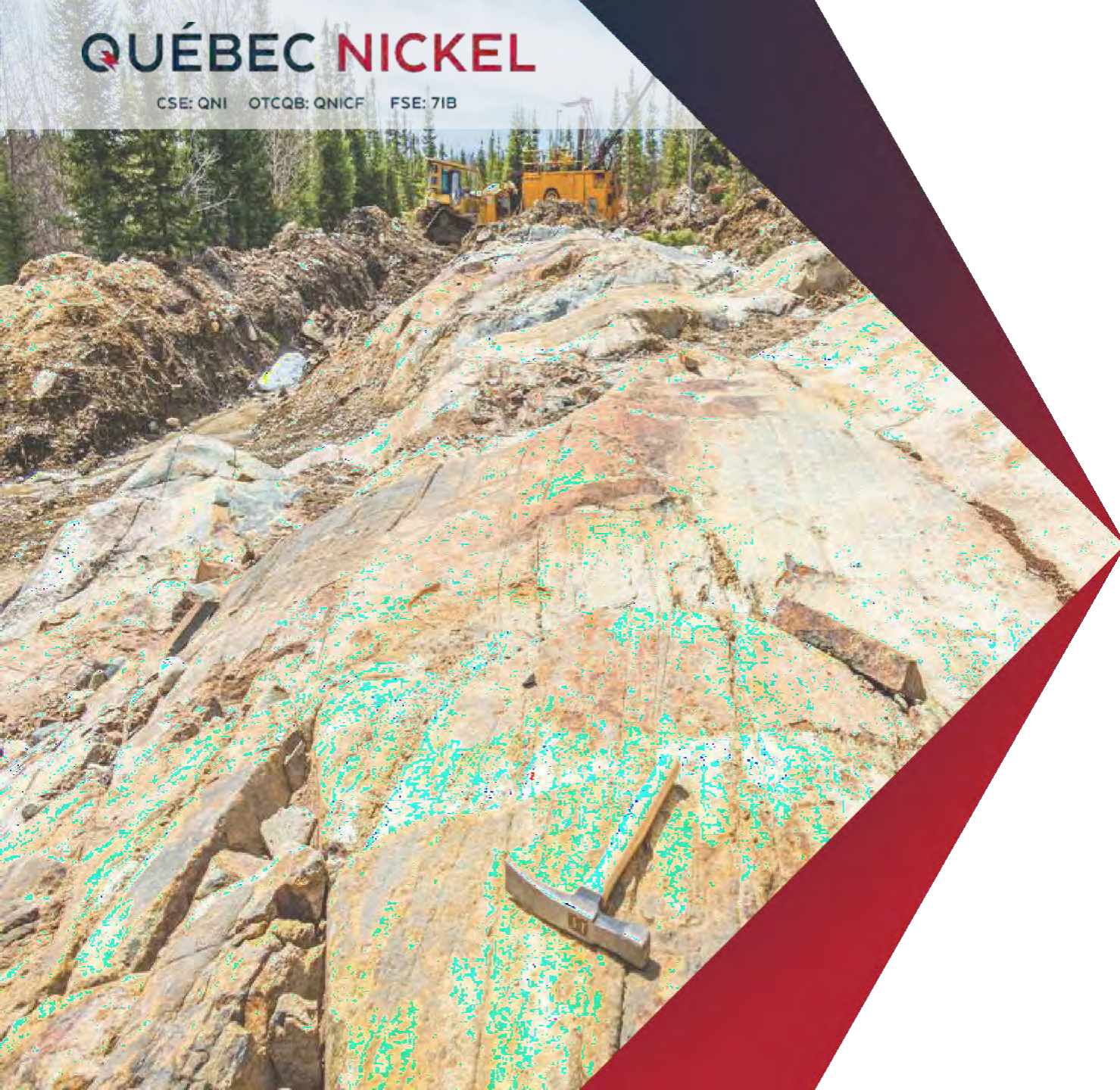
Ownership*

- Institutional
- Institutional Québec Funds
- Management & Insider
- Retail



*As at January 30, 2024

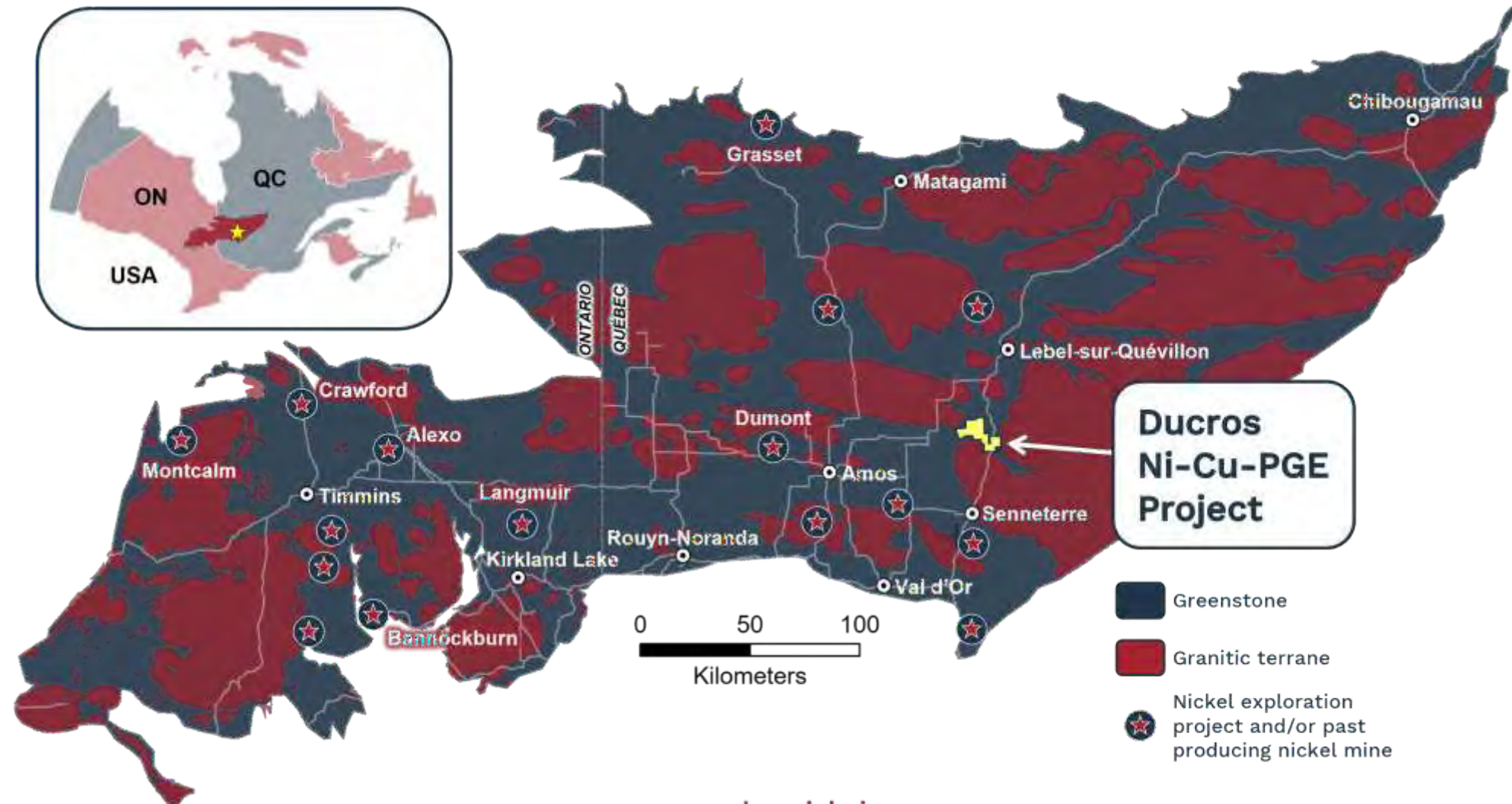




THE DUCROS PROJECT

The Ducros Project

LOCATED IN THE EASTERN ABITIBI GREENSTONE BELT NORTHEAST OF VAL-D'OR QUÉBEC





The Ducros Ni-Cu-PGE Project

✓ **Status:** Exploration Stage

- 2022: 21,000 m inaugural drill program
- 2023: 17,835 m of drilling completed

✓ **Ownership:** 100% owned by Québec Nickel Corp. with 282 claims and more than 15,000 hectares

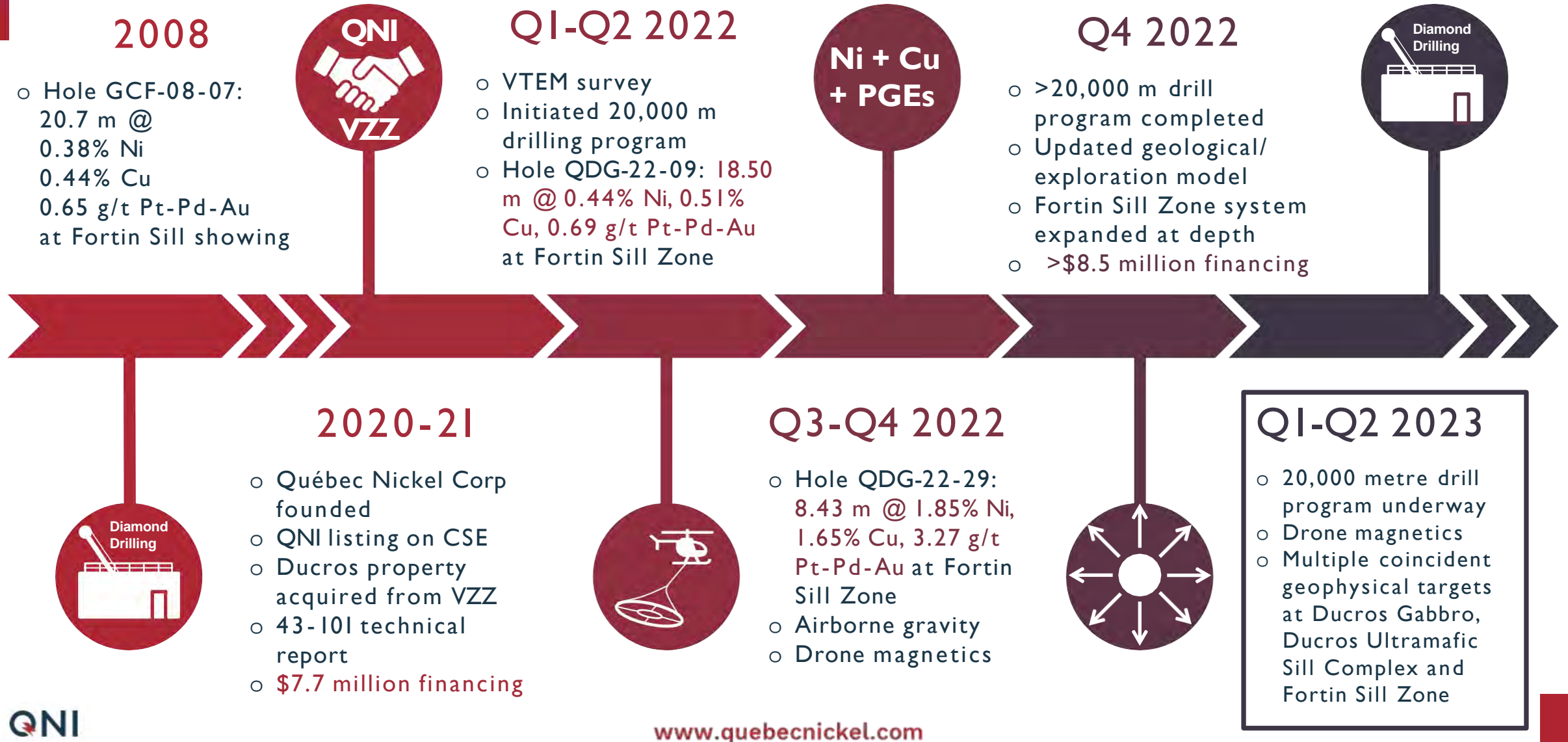
✓ **Location:** Eastern Abitibi Greenstone Belt

- Mining-friendly province of Québec
- 85km from Val-d'Or between the towns of Lebel-sur-Quévillon (45km) and Senneterre (30km)

✓ **Access:** Excellent infrastructure

- Provincial Highway 113 crossing through the property
- Well established network of logging roads
- Val d'Or regional airport 100km away
- Lebel-sur-Quévillon airstrip 40km from project
- Rail line and power within 5km
- Local skilled workforce

Québec Nickel Corp & Ducros Project History



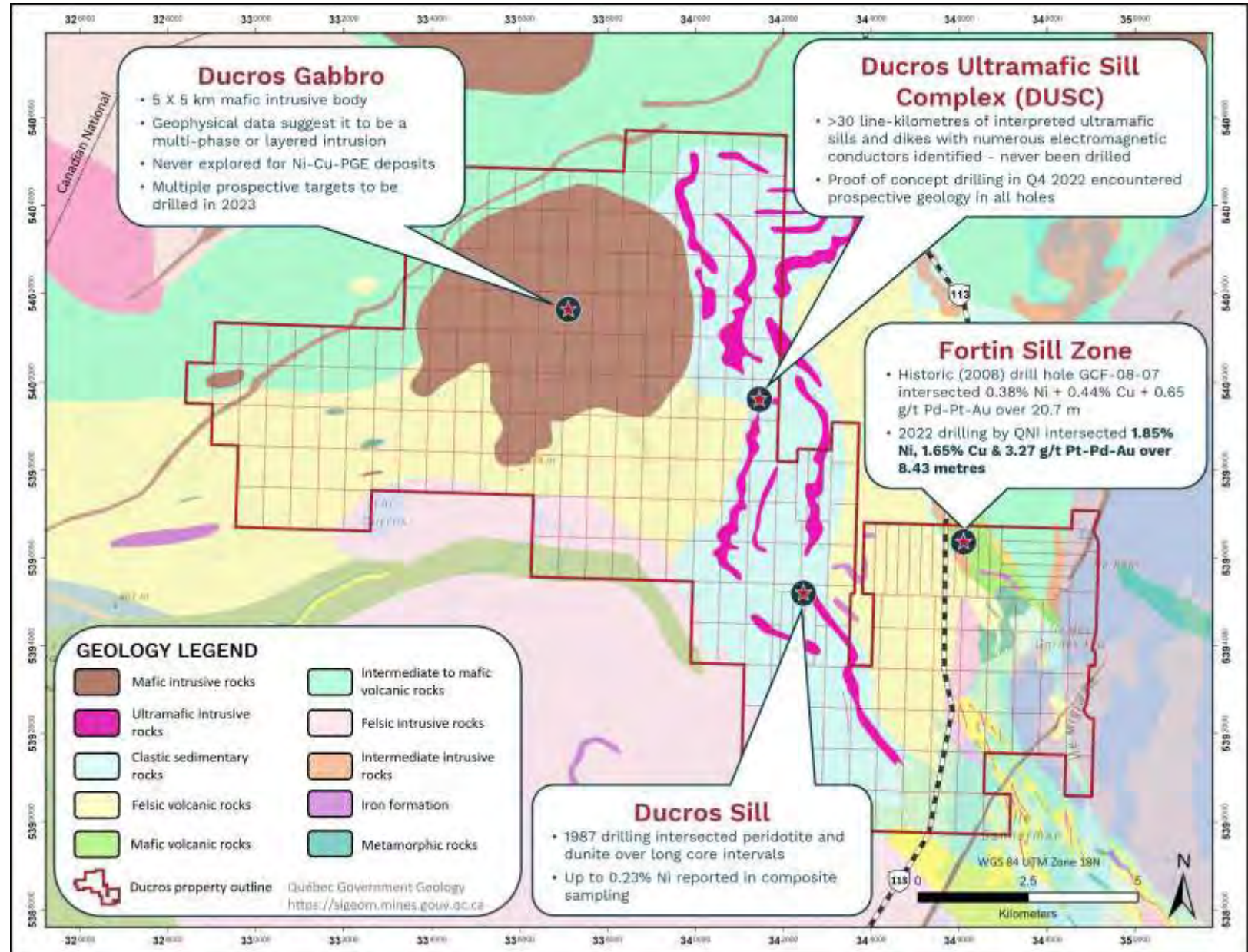


Project Highlights & Catalysts

- High-grade Ni-Cu-PGE-Au drilled at Fortin Sill Zone e.g. 11.80 metres @ 2.93% Ni + Cu + 2.79 g/t Pt-Pd-Au in hole QDG- 22-29
- Scoping-level metallurgical study at Fortin Sill Zone
- Exploration & expansion drilling of Fortin Sill Zone ongoing
- Large Ni + Co-bearing serpentized intrusive body confirmed at Ducros Sill; over seven kilometres of strike length remains to be drilled
- VTEM, drone magnetics & airborne gravity data integration & development into 3D geological / structural model of property

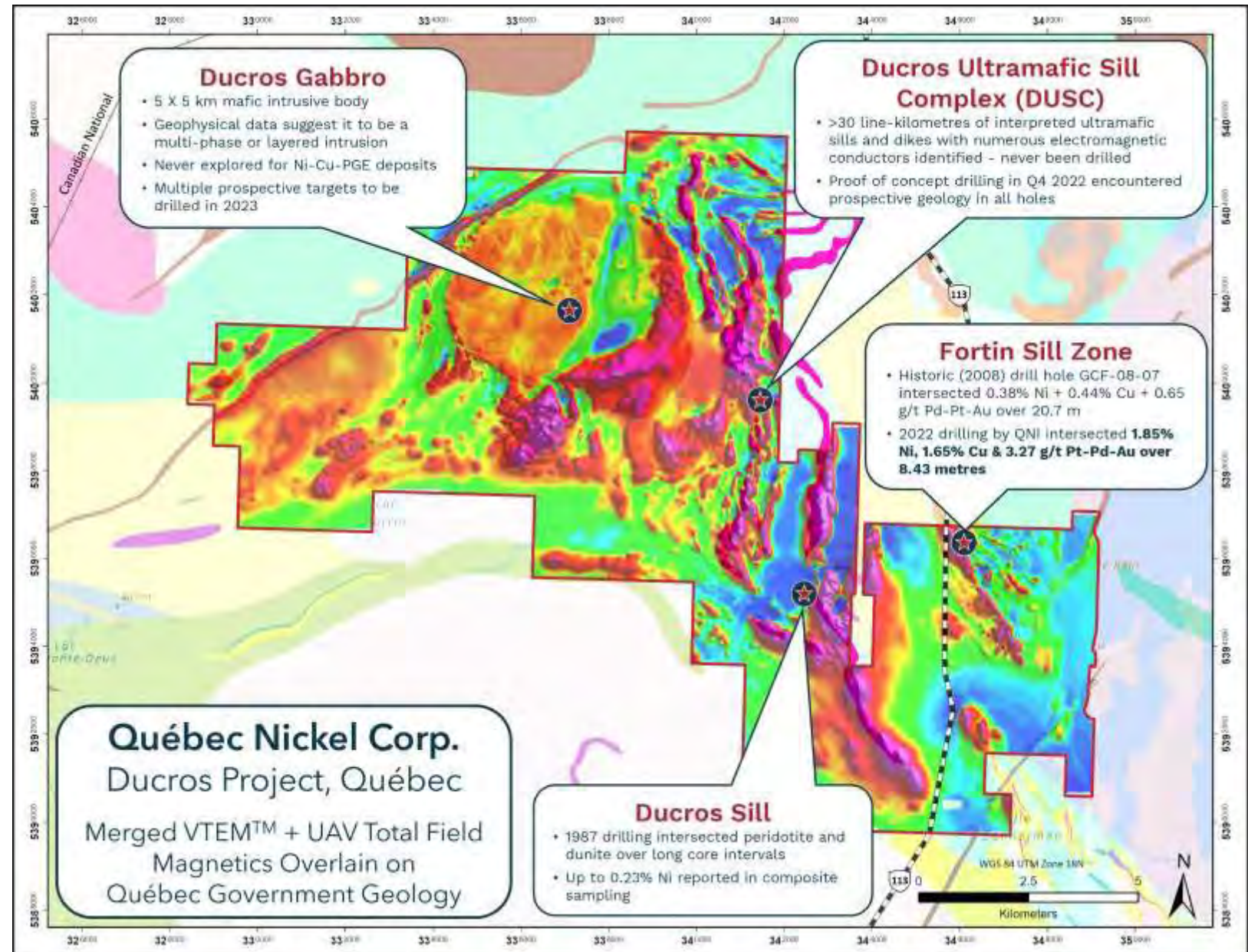
Infrastructure, Property Geology & Exploration Targets

- ✓ Located 80km NE of Val-d'Or > 15,000-hectare property
- ✓ Highway access
- ✓ Rail line
- ✓ 30-minute drive to Lebel-sur-Quévillon and Senneterre
- ✓ Prospective geology



Airborne Geophysics, Geology & Exploration Targets

- ✓ VTEM™
- ✓ Drone magnetics
- ✓ Airborne gravity
- ✓ Borehole EM
- ✓ Biogeochemistry
- ✓ Lidar & orthophoto
- ✓ Satellite imagery
- ✓ Lithogeochemistry
- ✓ Re-Os age date
- ✓ Geological mapping
- ✓ Petrography & μ XRF



ESG

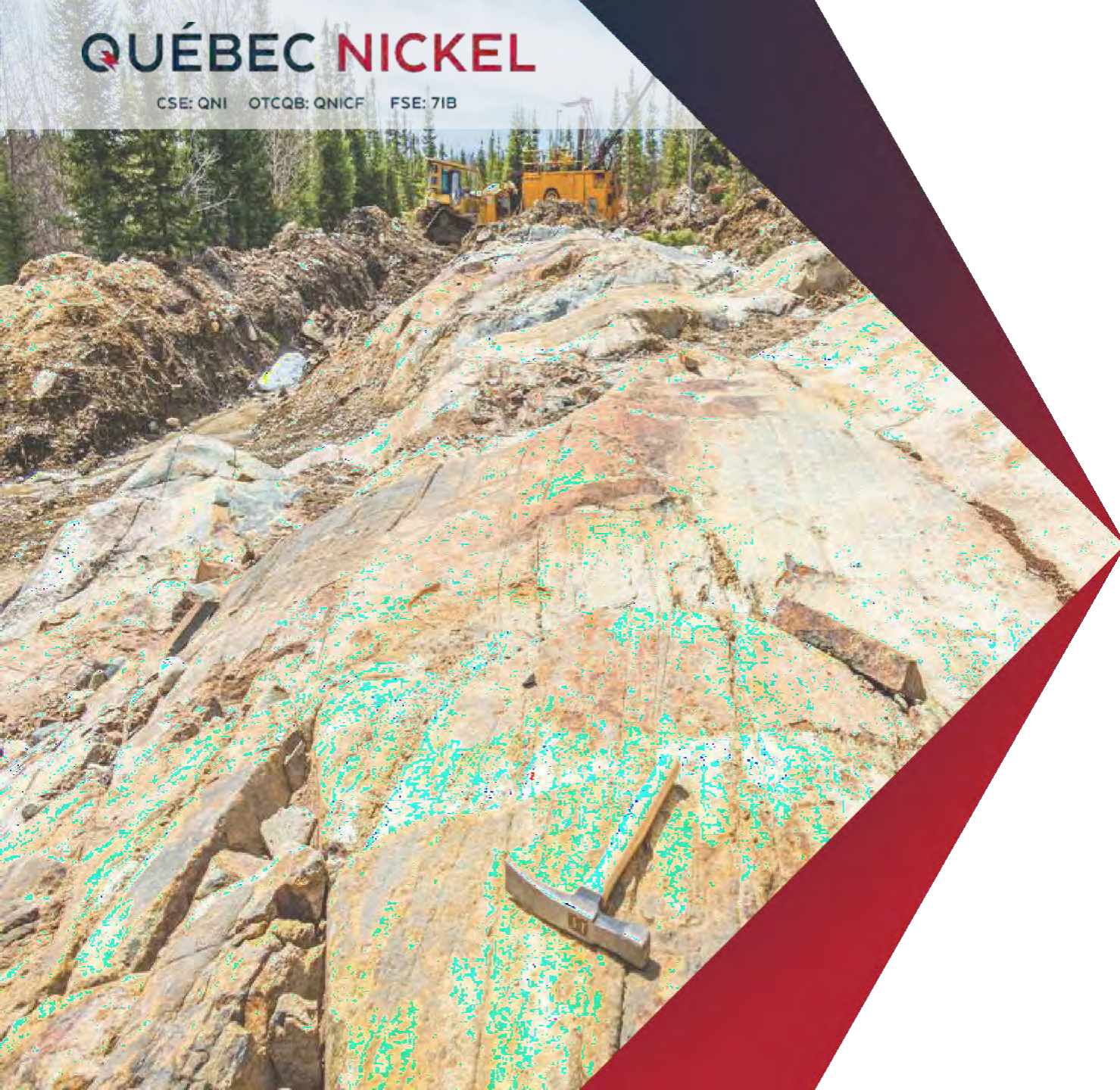
SOCIAL PROGRAMS

- ✓ Communications with local First Nations (Lac Simon), Senneterre & local Governments
- ✓ Meetings with Lebel-sur-Quévillon's town management
- ✓ Positive interactions with local hunters & trappers

ENVIRONMENTAL

- ✓ Access to DUSC target area using environmental matting
- ✓ Local permitting consultant
- ✓ Environmental Baseline Study (in progress)

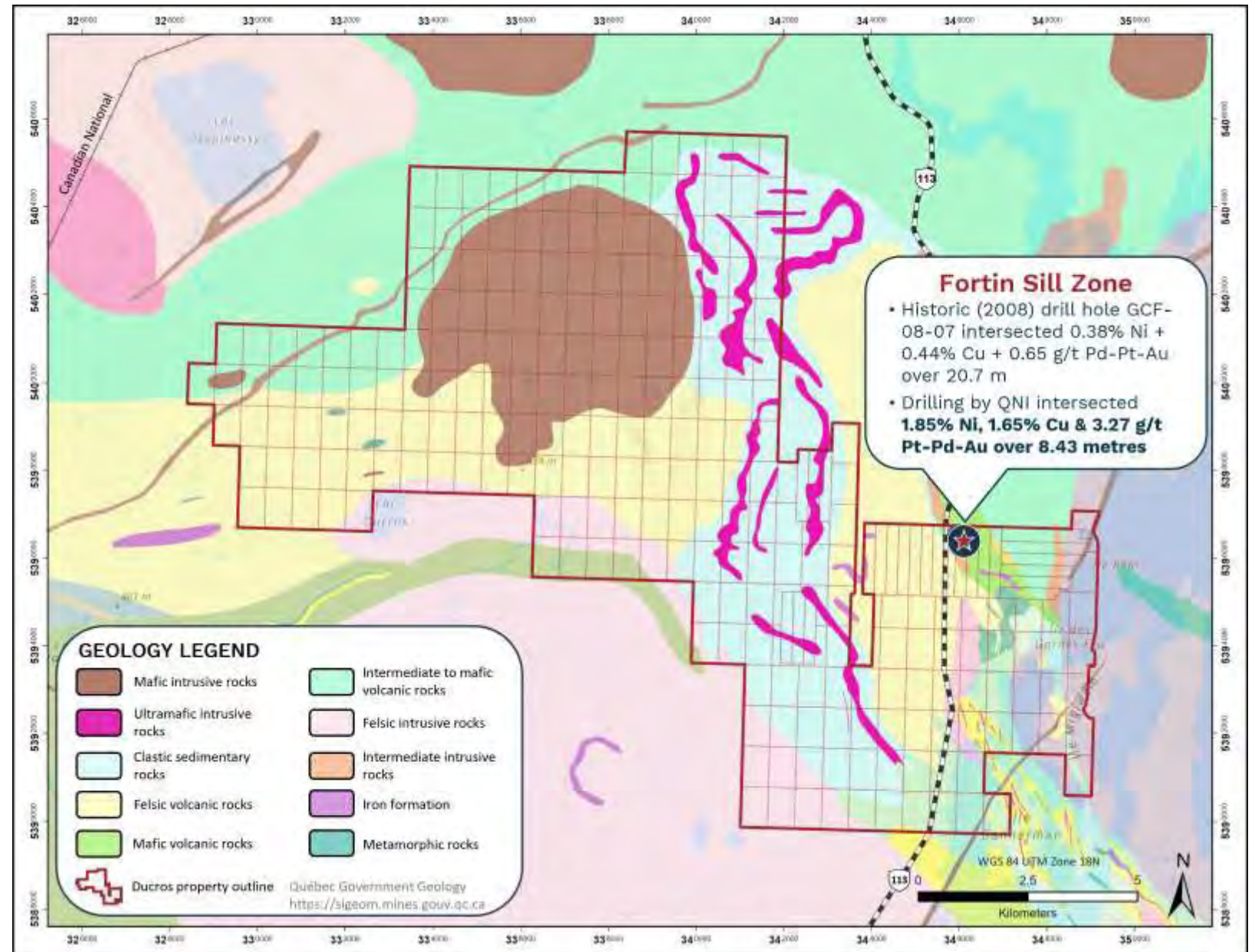




FORTIN SILL ZONE

High grade Ni-Cu- Co-PGE mineralization:

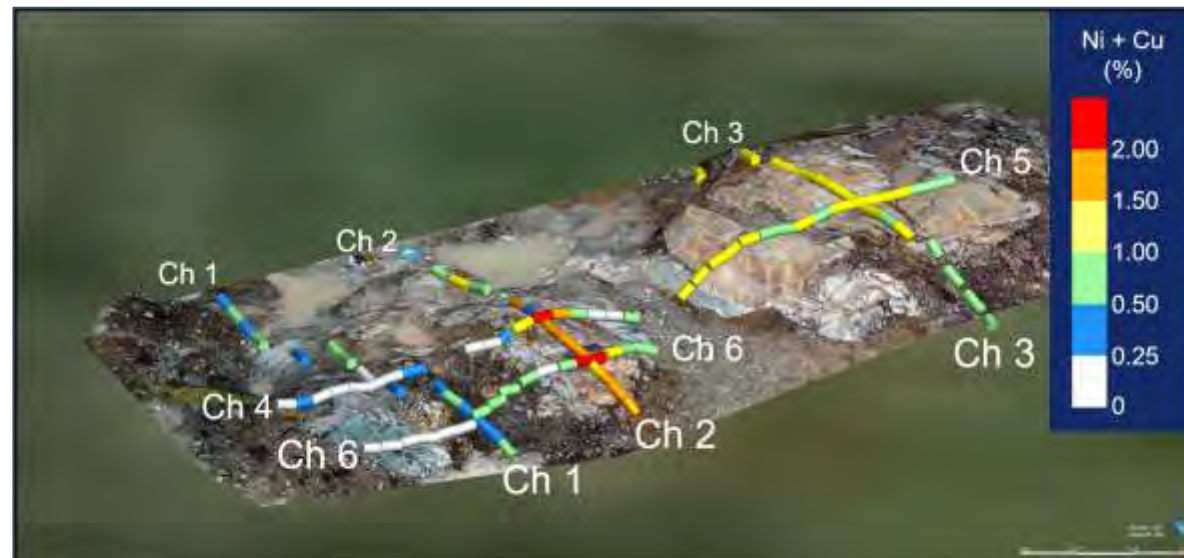
- ✓ Exposed at surface
- ✓ Intersected in recent drilling over significant core lengths
- ✓ System still open at depth and along strike
- ✓ Scoping-level metallurgical studies underway



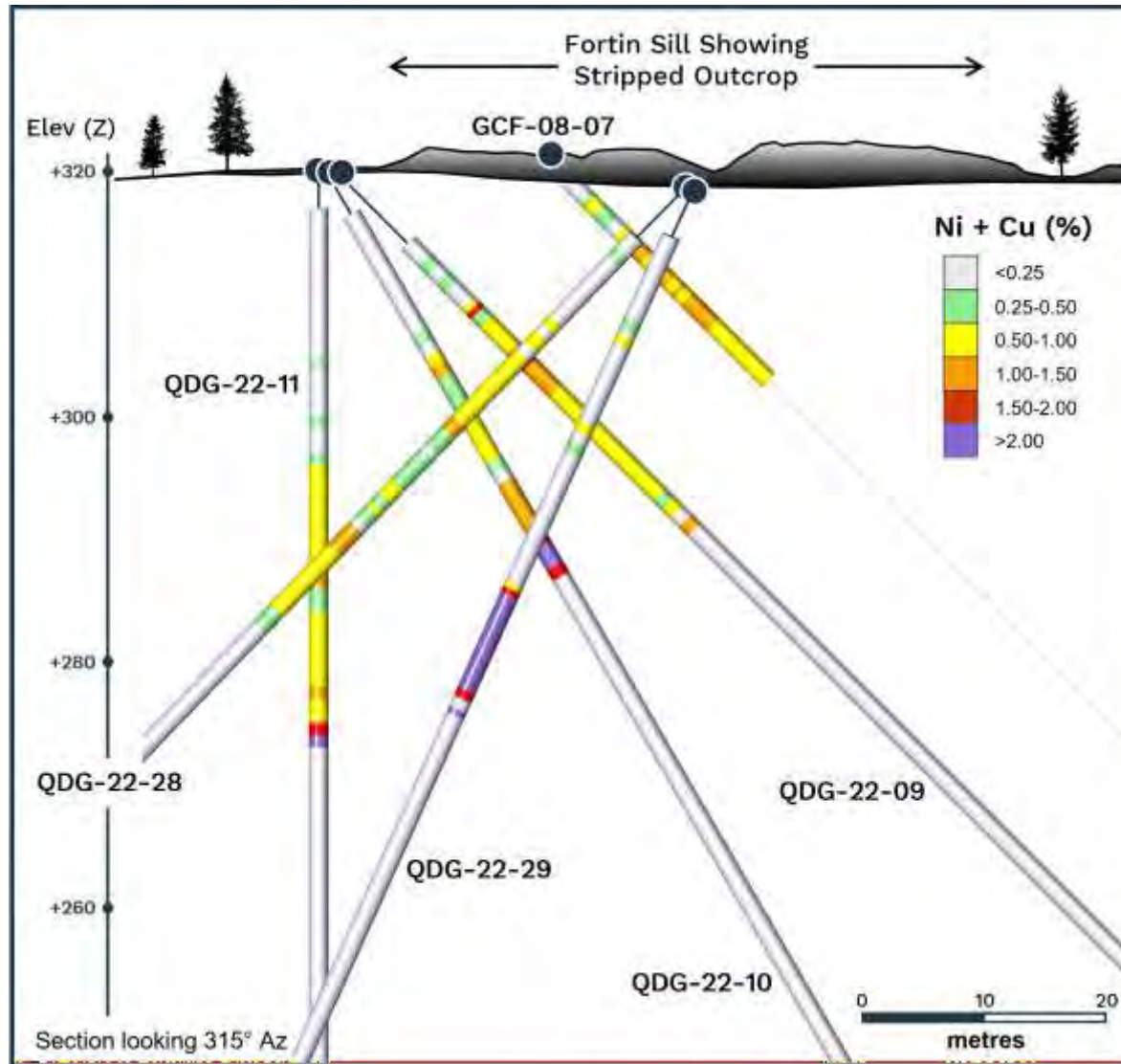
Fortin Sill Zone Discovery Outcrop Channel Sampling



Channel_ID	Length (m)	Ni (%)	Cu (%)	Cu+Ni (%)	Co (ppm)	Pt (g/t)	Pd (g/t)	Au (g/t)	3E (g/t)
Channel 1	15.65	0.16	0.28	0.44	119	0.40	0.31	0.15	0.86
Channel 2	13.00	0.37	0.93	1.30	179	0.50	0.58	0.31	1.39
<i>including</i>	7.16	0.36	1.24	1.60	178	0.77	0.81	0.44	2.02
Channel 3	13.79	0.48	0.57	1.05	207	0.45	0.44	0.22	1.11
Channel 4	18.04	0.16	0.35	0.51	115	0.23	0.26	0.13	0.62
<i>including</i>	3.81	0.32	1.20	1.52	179	0.70	0.79	0.43	1.92
Channel 5	14.45	0.48	0.60	1.08	207	0.52	0.52	0.22	1.26
Channel 6	11.11	0.26	0.79	1.05	135	0.78	0.69	0.43	1.90
<i>including</i>	6.10	0.40	1.11	1.51	181	0.92	0.87	0.56	2.35



Fortin Sill Zone Drilling



GCF-08-07 (historic drill hole)
20.70 metres @ 0.38% Ni + 0.44% Cu + 0.65 g/t Pt-Pd-Au

QDG-22-09 (QNI's first hole at Fortin Sill)
31.00 metres @ 0.37% Ni + 0.40% Cu + 176 ppm Co + 0.55 g/t Pt-Pd-Au

QDG-22-10
29.00 metres @ 0.36% Ni + 0.41% Cu + 167 ppm Co + 0.95 g/t Pt-Pd-Au

QDG-22-11
32.67 metres @ 0.33% Ni + 0.32% Cu + 170 ppm Co + 0.57 g/t Pt-Pd-Au

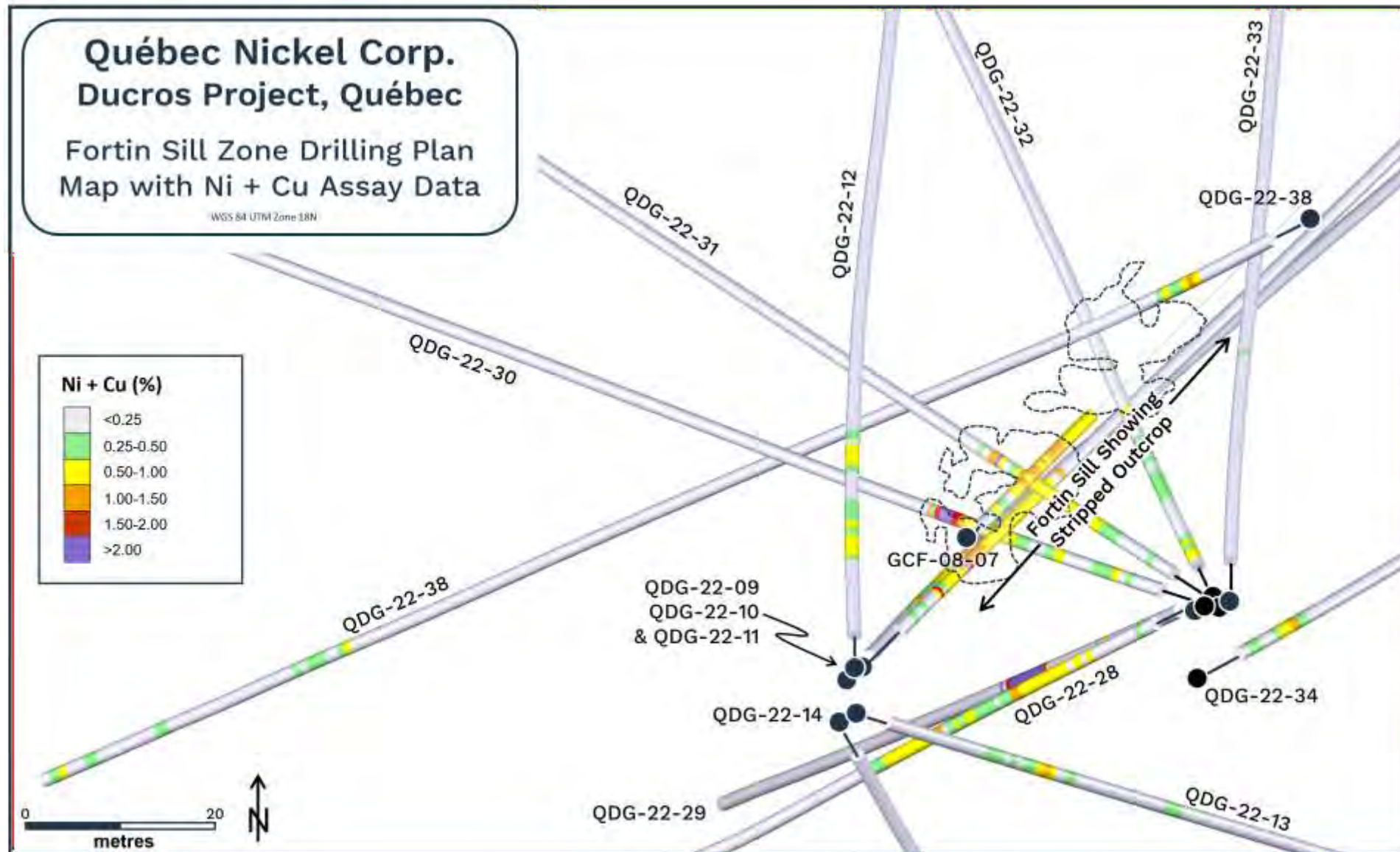
QDG-22-28
29.90 metres @ 0.30% Ni + 0.31% Cu + 167 ppm Co + 0.45 g/t Pt-Pd-Au

QDG-22-29
35.63 metres @ 0.59% Ni + 0.54% Cu, 238 ppm Co + 1.01 g/t Pt-Pd-Au
including high-grade subintervals:

11.80 m @ 1.44% Ni + 1.49% Cu, 461 ppm Co and 2.79 g/t Pt-Pd-Au

8.43 m @ 1.85% Ni + 1.65% Cu, 576 ppm Co and 3.27 g/t Pt-Pd-Au

Fortin Sill Zone Drilling



Fortin Sill Zone Assay Results

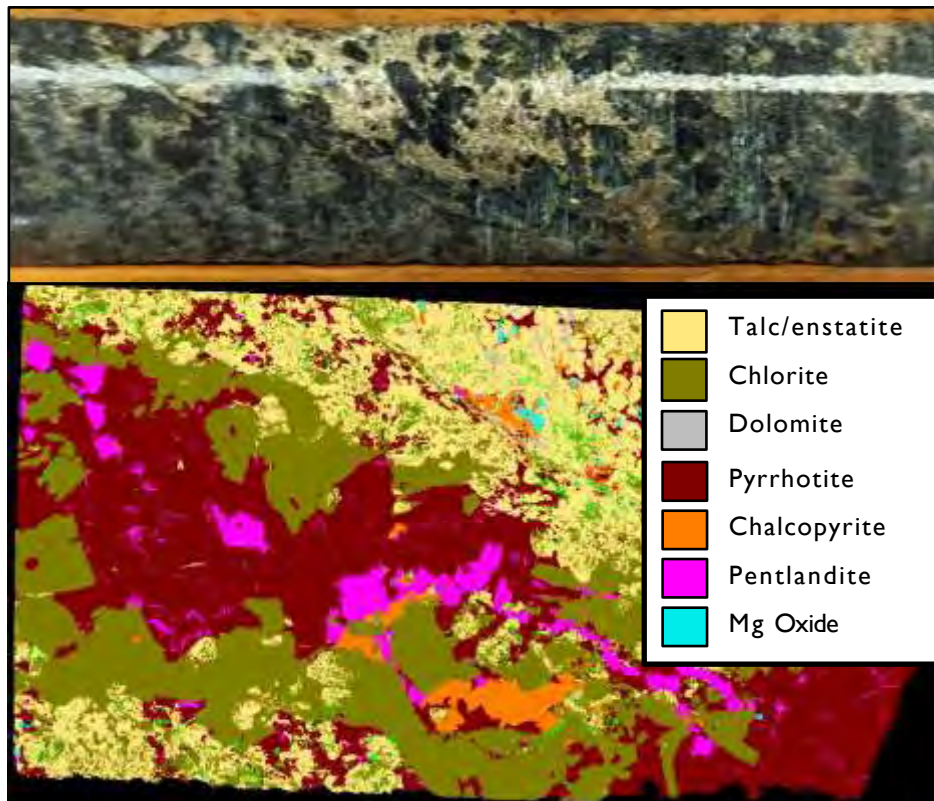
Hole ID	From (m)	To (m)	Length (m)	Ni (%)	Cu (%)	Ni + Cu (%)	Co (ppm)	Pt (g/t)	Pd (g/t)	Au (g/t)	3E (g/t)
QDG-22-09	10.00	41.00	31.00	0.37	0.40	0.77	176	0.20	0.21	0.14	0.55
<i>Including</i>	15.50	34.00	18.50	0.44	0.51	0.95	193	0.23	0.27	0.19	0.69
<i>and</i>	20.00	25.00	5.00	0.55	0.86	1.41	207	0.22	0.32	0.32	0.86
QDG-22-10	9.00	38.00	29.00	0.36	0.41	0.77	167	0.33	0.40	0.22	0.95
<i>Including</i>	29.00	38.00	9.00	0.70	0.79	1.49	271	0.62	0.78	0.31	1.71
<i>and</i>	34.00	38.00	4.00	0.90	1.01	1.91	324	0.93	1.10	0.36	2.39
QDG-22-11	15.33	48.00	32.67	0.33	0.32	0.65	170	0.20	0.25	0.12	0.57
<i>Including</i>	24.00	47.00	23.00	0.42	0.41	0.83	205	0.24	0.31	0.14	0.69
<i>and</i>	41.00	47.00	6.00	0.62	0.60	1.22	256	0.32	0.46	0.23	1.01
QDG-22-28	5.61	49.00	43.39	0.24	0.25	0.49	146	0.10	0.14	0.11	0.35
<i>including</i>	19.10	49.00	29.90	0.30	0.31	0.61	167	0.13	0.18	0.14	0.45
<i>including</i>	19.10	28.00	8.90	0.34	0.43	0.77	179	0.15	0.23	0.21	0.59
<i>and</i>	39.00	42.24	3.24	0.46	0.64	1.10	209	0.19	0.28	0.25	0.72
QDG-22-29	11.67	47.30	35.63	0.59	0.54	1.13	238	0.44	0.42	0.15	1.01
<i>including</i>	35.50	47.30	11.80	1.44	1.49	2.93	461	1.23	1.16	0.40	2.79
<i>including</i>	36.00	44.43	8.43	1.85	1.65	3.50	576	1.50	1.37	0.40	3.27
QDG-22-30	10.00	43.00	33.00	0.35	0.35	0.70	167	0.24	0.29	0.14	0.67
<i>including</i>	28.00	41.77	13.77	0.58	0.60	1.18	230	0.47	0.56	0.23	1.26
<i>including</i>	37.00	41.77	4.77	1.07	1.19	2.26	364	1.06	1.21	0.43	2.70
QDG-22-31	9.00	37.60	28.60	0.31	0.22	0.53	157	0.14	0.18	0.08	0.40
<i>including</i>	22.50	37.06	14.56	0.43	0.33	0.76	193	0.21	0.26	0.1	0.57
<i>including</i>	35.32	37.06	1.74	0.65	0.88	1.53	243	0.40	0.47	0.12	0.99
QDG-22-32	6.50	30.68	24.18	0.19	0.12	0.31	122	0.07	0.09	0.05	0.21
<i>including</i>	6.50	9.38	2.88	0.25	0.35	0.6	131	0.10	0.13	0.13	0.36
QDG-22-38	17.00	24.00	7.00	0.37	0.27	0.64	164	0.26	0.27	0.13	0.66
<i>and</i>	151.00	162.13	11.13	0.12	0.18	0.30	98	0.20	0.20	0.07	0.47
<i>and</i>	190.00	199.55	9.55	0.11	0.16	0.27	102	0.08	0.07	0.07	0.22



Mineral Composition Studies

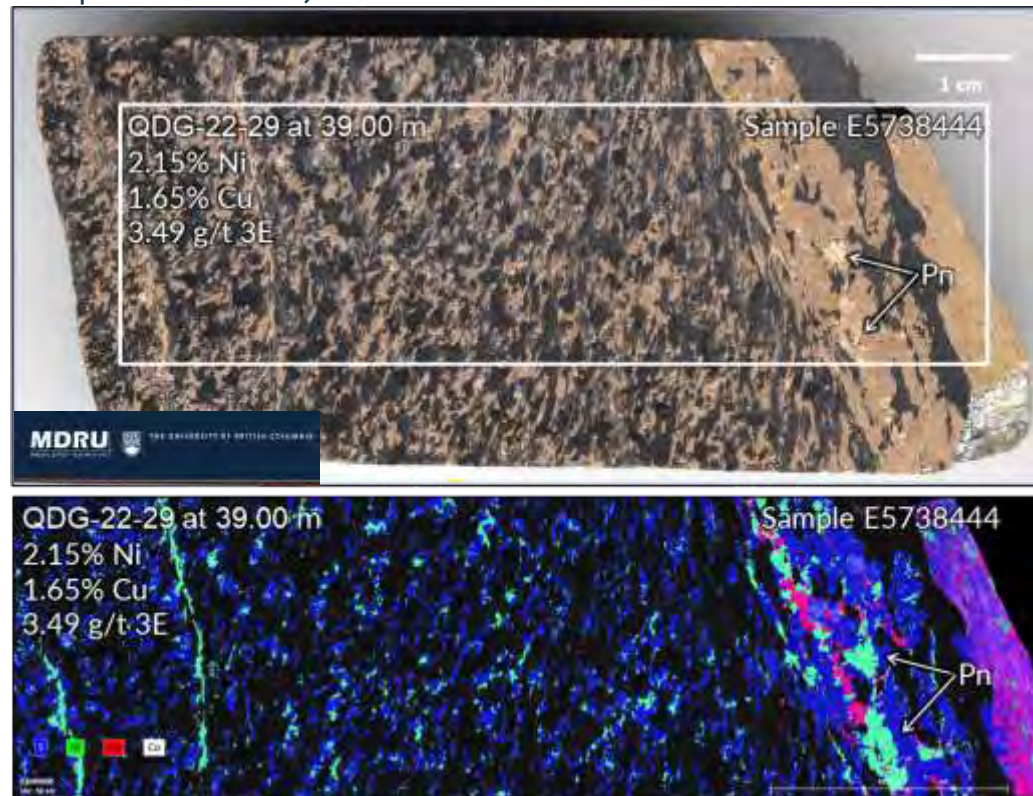
PETROGRAPHY

- ❑ Sample X369965 hole QDG-22-28 @ 36.50 m
- ❑ Host rocks at Fortin Sill are gabbronorites

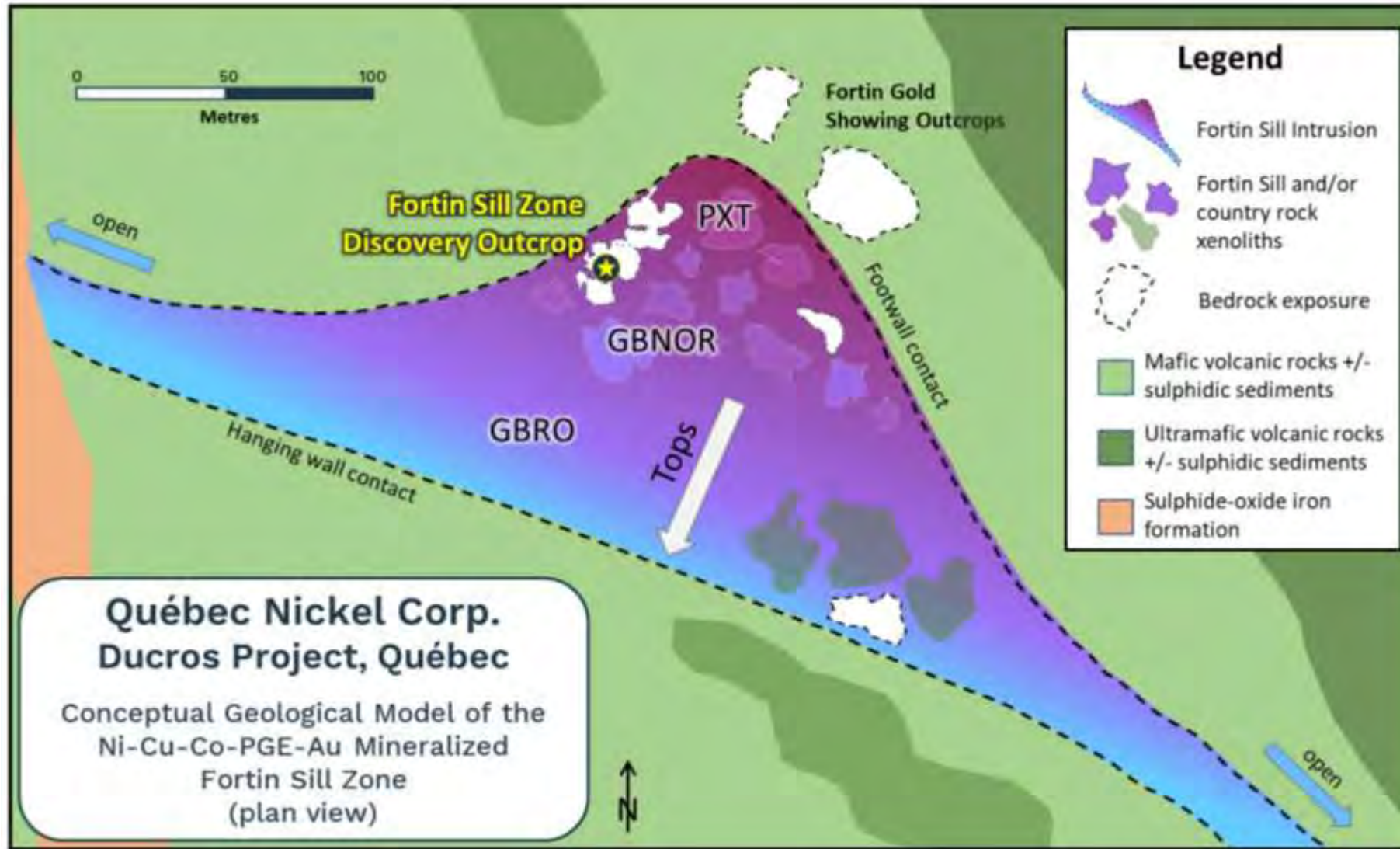


MINERAL DEPARTMENT STUDY

- ❑ μ XRF technology at UBC's Mineral Deposit Research Unit (MDRU)
- ❑ Ni-Cu-PGE's are in sulphide, not silicates (Pn = pentlandite)



Updated Geology Model @ Fortin Sill Zone

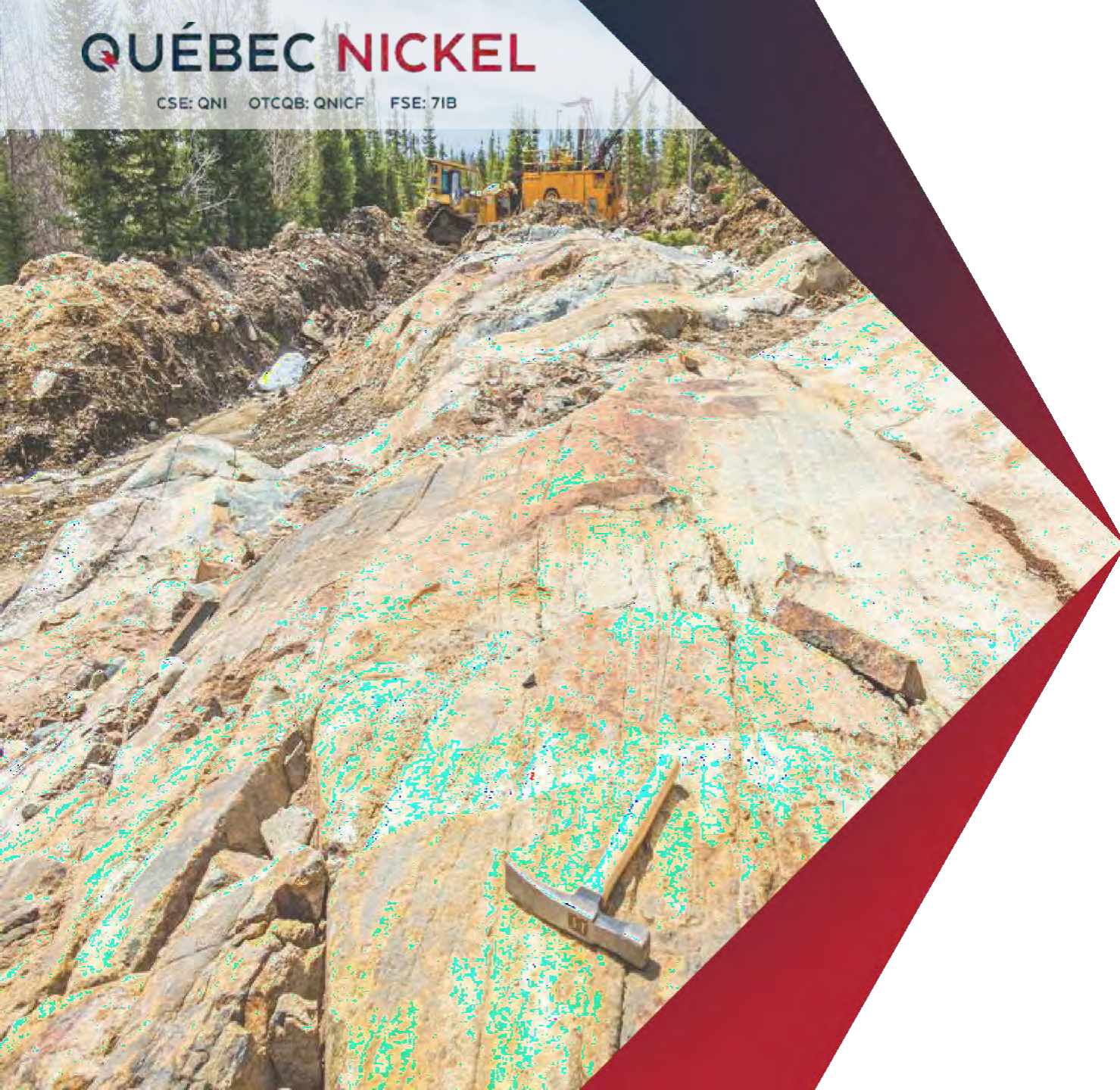


- ❑ Embayment structure identified through mapping & drilling
- ❑ Dynamic/energetic intrusive system indicated by large blocks (xenoliths) of country rock within intrusion
- ❑ Gradational intrusion from pyroxenite / gabbro-norite base to gabbroic top
- ❑ Target footwall contact open along strike for km's and at depth

Fortin Sill - Metallurgical Test Work Program



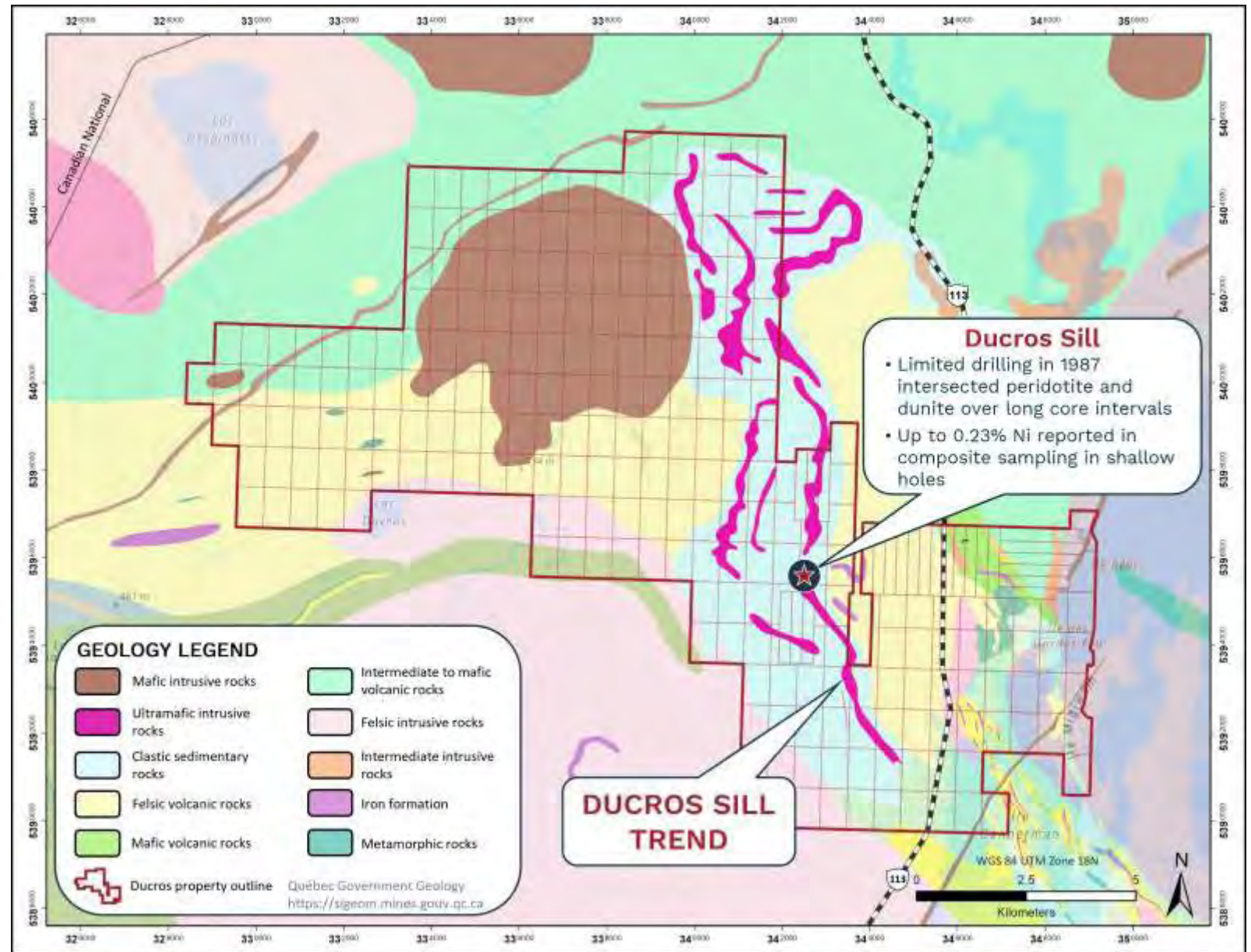
- ❑ SGS Canada completed 18-week scoping level metallurgical test work program
- ❑ 150 kg of mineralized HQ diameter drill core delivered to SGS' Québec City laboratory to complete:
 - Bond ball mill grindability
 - Flotation testing
 - Solid-liquid separation
 - Environmental analyses



DUCROS SILL

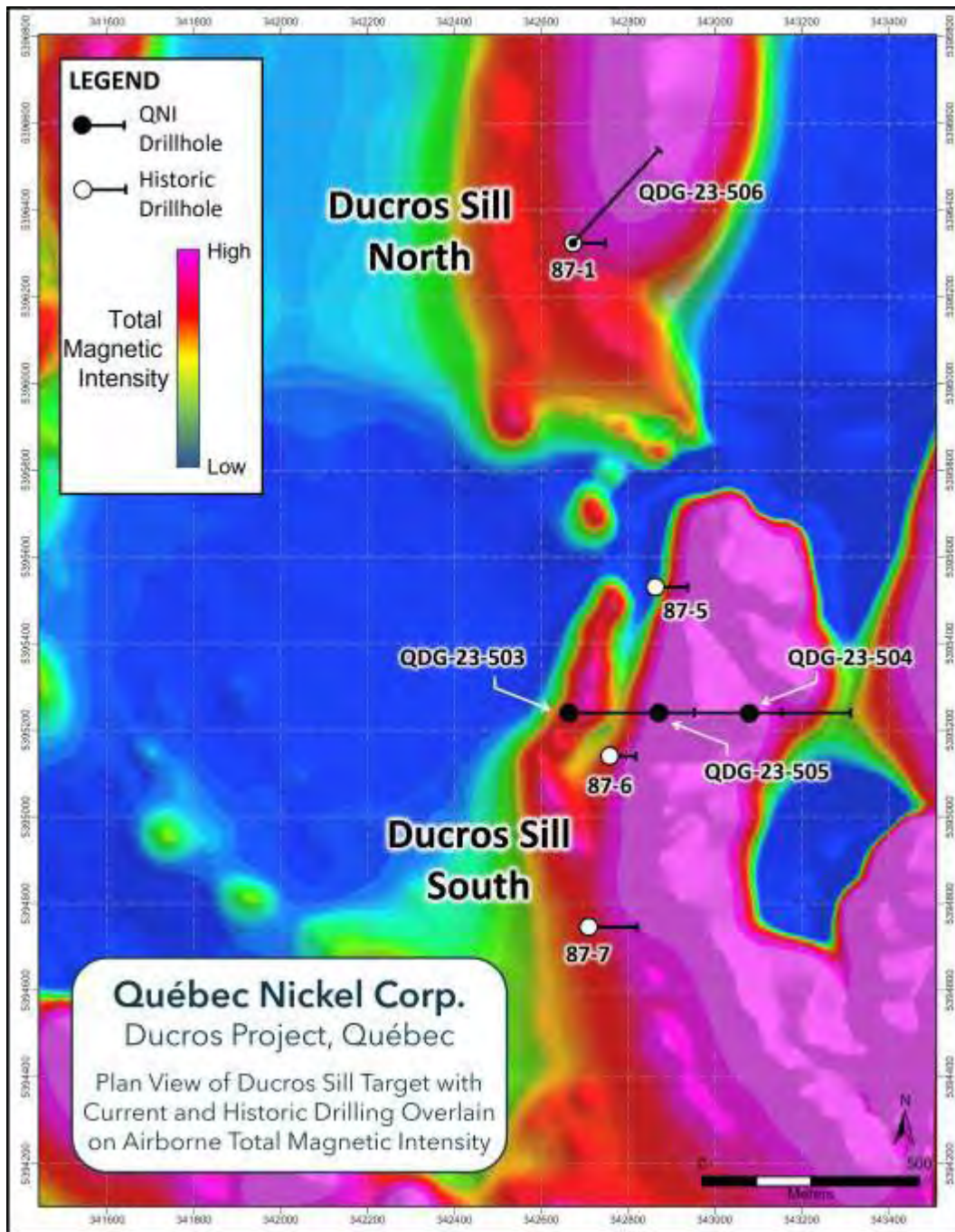
Ducros Sill

- ❑ Limited historical drilling completed in 1987 targeting magnetic high anomalies
- ❑ Greater than 0.23% nickel + 120 ppm cobalt reported at the end of an abandoned 106.7- metre-long hole (hole 87-6) in an altered dunite
- ❑ QNI completed several holes at Ducros Sill in early 2023



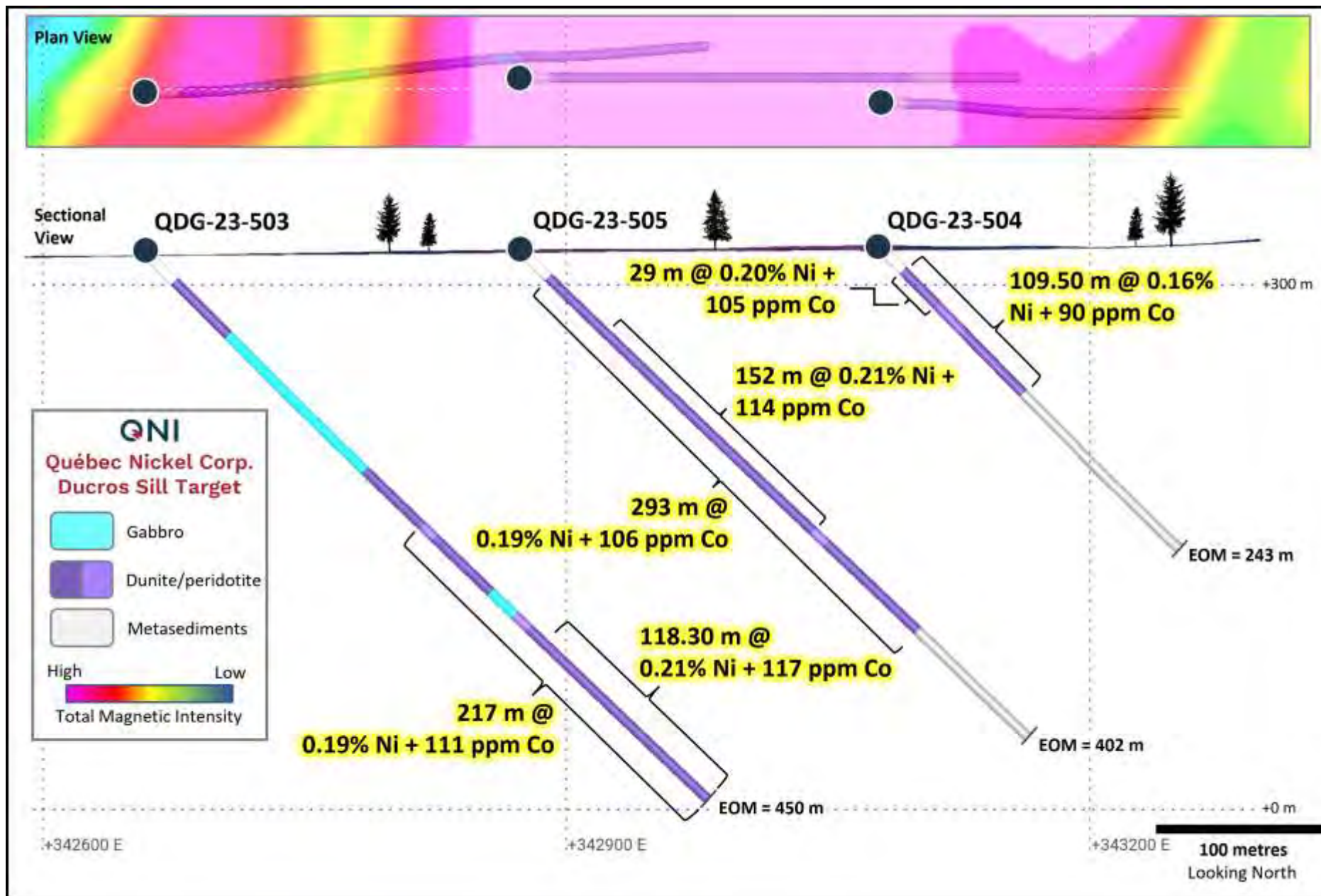
Ducros Sill

- 2023 drilling confirms occurrence of large Ni-Co-bearing serpentized ultramafic body with a geophysical signature several hundred metres wide and kilometres long



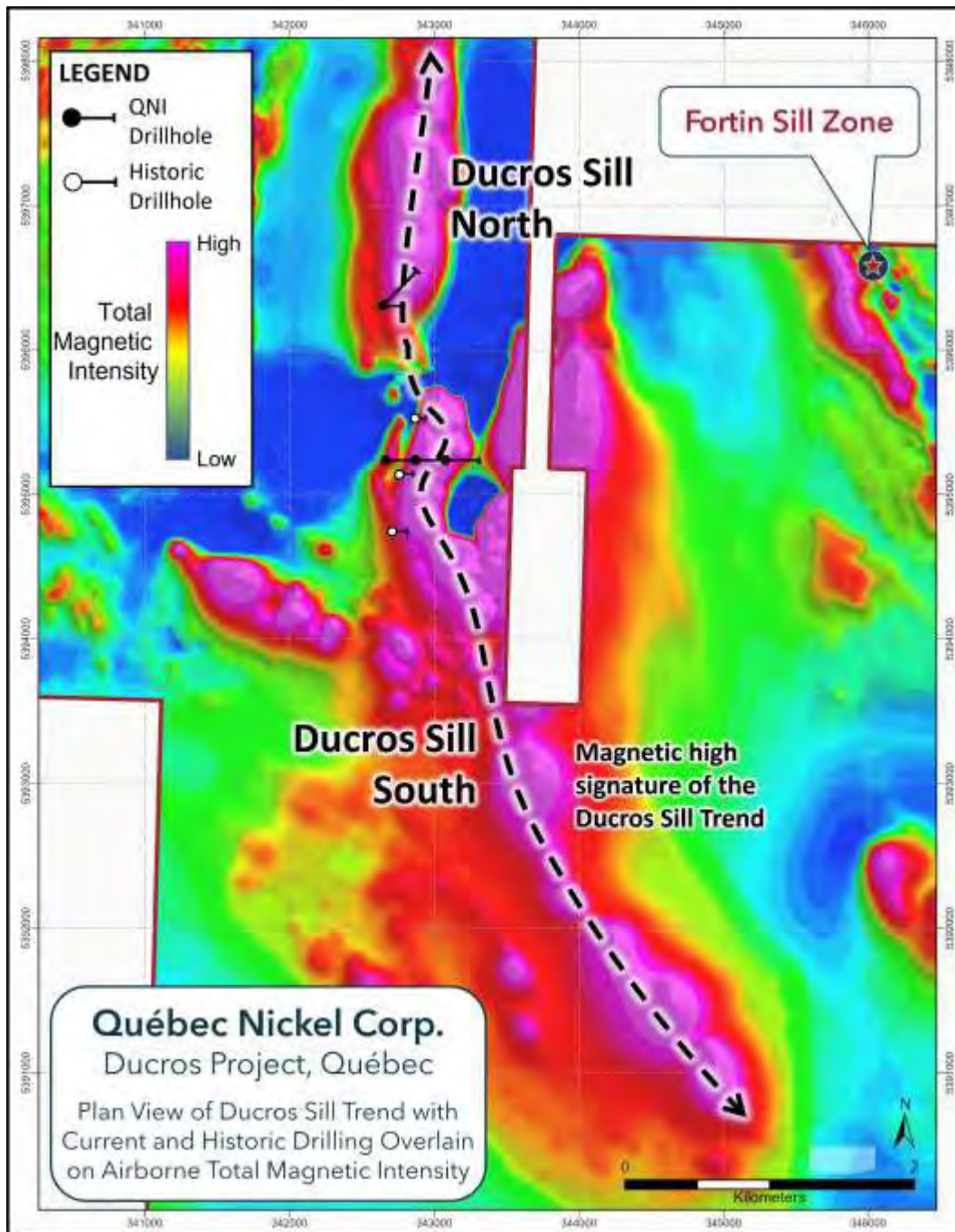
Hole ID	From (m)	To (m)	Length (m)	Ni (%)	Co (ppm)
QDG-23-503	233.00	450.00	217.00	0.19	111
<i>including</i>	308.20	426.50	118.30	0.21	117
QDG-23-504	21.00	130.50	109.50	0.16	90
<i>including</i>	21.00	50.00	29.00	0.20	105
QDG-23-505	21.00	314.00	293.00	0.19	106
<i>including</i>	79.50	231.50	152.00	0.21	114
QDG-23-506	Assays pending				

Ducros Sill Drill Section



Ducros Sill

- 2023 drilling confirms occurrence of large Ni-Co-bearing serpentinitized ultramafic body with a geophysical signature several hundred metres wide and kilometres long



Hole ID	From (m)	To (m)	Length (m)	Ni (%)	Co (ppm)
QDG-23-503	233.00	450.00	217.00	0.19	111
<i>including</i>	308.20	426.50	118.30	0.21	117
QDG-23-504	21.00	130.50	109.50	0.16	90
<i>including</i>	21.00	50.00	29.00	0.20	105
QDG-23-505	21.00	314.00	293.00	0.19	106
<i>including</i>	79.50	231.50	152.00	0.21	114
QDG-23-506	Assays pending				



Contact Us



ADDRESS

1100 - 1111 Melville Street
Vancouver, BC V6E 3V6
CANADA



PHONE

1 (855) QNICKEL
1 (855) 764-2535



EMAIL

info@quebecnickel.com

www.quebecnickel.com

